

vive®



ELECTRIC BED RAIL FRAME

Owner's Manual
LVA2043

vivehealth.com

WARNINGS AND PRECAUTIONS

Read all safety instructions thoroughly prior to using this product.

Prior to Use

- Carefully remove packaging.
- Take care not to damage the bed frame or any included parts.
- Carefully read and follow the product overview and assembly instructions included with the product.

Electrical Considerations

- This product is for use on a standard 120-volt circuit.
- Always use a grounded, electrical surge protection device with this product. This product should be plugged directly into the surge protection device and the surge protection device should be plugged directly into a wall outlet.
- Only connect this product to a properly grounded outlet.
- Always unplug the bed from the electrical outlet before cleaning or servicing.
- Never operate with a damaged cord or plug.
- Keep the cord away from this product's moving parts.
- Keep the cord away from heated surfaces.
- Do not use this product outdoors.

Small Children/Pet Considerations

- Immediately dispose of all packing materials that may pose a suffocation risk.
- Do not allow children or pets to play on or under the bed.
- Children should not operate this product without adult supervision.

Home Use

This product is designed solely for in-home use and not as a hospital bed.

- The bed does not meet hospital standards.
- Do not use with oxygen or other flammable gasses.

Weight Restrictions

The weight restrictions are as follows (all weights include the weight of the mattress and bedding): **Single person: 350 lbs.**

- This product will support the recommended weight limits when weight is distributed evenly across the base.
- This product is not designed to support or lift this amount in the head section alone.
- Consumers should not enter or exit the bed when any portion of it is in the raised position.
- Do not sit on the head section while in the raised position.
- Exceeding the recommended weight restrictions or other misuse of this product could damage the bed.

OVERVIEW

Before beginning assembly of the Electric Bed Rail Frame, please take a moment to familiarize yourself with the parts and location of components. See the adjacent image for a detailed overview. If any parts or components are missing, or are different than shown in the adjacent image, do not attempt to complete the assembly process.

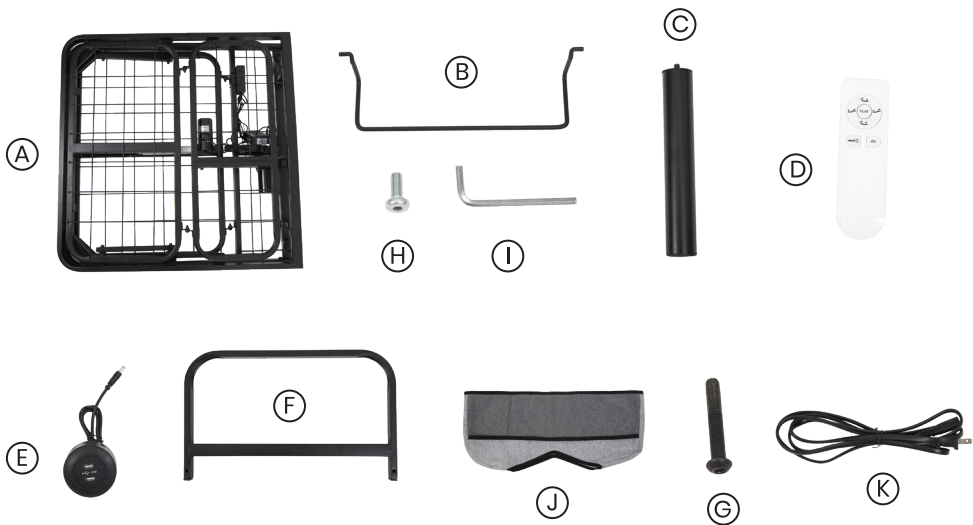
We are constantly answering questions and recording helpful videos to make using your Vive Electric Bed Rail Frame as easy as possible. Check out the included links and QR codes to help you through the process.



To see all of the FAQs in one place,
visit [**vhealth.link/urr**](https://vhealth.link/urr)

WHAT'S INCLUDED

- | | | |
|-----------------------------|---------------------|----------------|
| (A) Frame | (E) USB Port | (I) Allen Key |
| (B) Retainer Bar | (F) 2x Armrest | (J) Walker Bag |
| (C) 6x Legs | (G) 4x Long Screws | (K) Power Cord |
| (D) Wireless Remote Control | (H) 2x Short Screws | |



ASSEMBLY



For video demonstration,
check out vhealth.link/urr

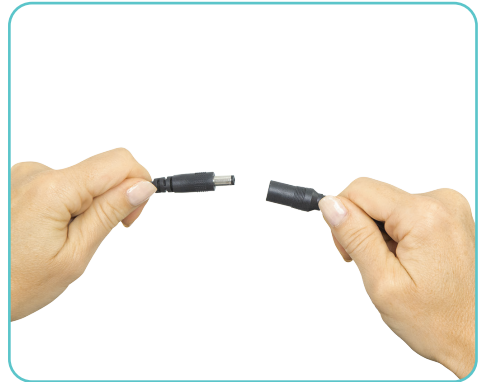
1. Unfold the Bed and thread / hand tighten the six (6) legs into the bed frame until secure.



2. Install the power cord by connecting the cord jack to the receptacle on the bottom of the bed frame. Be sure the cord is connected completely and securely.



3. Insert the USB power connection port into the bed frame controller.



4. Turn the bed over so it is standing on the six legs, then install the USB onto the side of the bed using 2 short screws (H).



5. Insert retainer bar ends into the base at the foot of the bed by inserting one end into the left or right opening. Pinch the free end toward the inserted end and insert the free end into the remaining opening. This will require a little force.



6. Install the armrests onto each side of the bed using 2 long screws (G) on each side.



7. Put the side bag over the armrest where it will be most conveniently located.







8. Plug the power cord into the wall outlet and run the test. You may want to familiarize yourself with the wireless remote control functions prior to running the test.

OPERATING THE ADJUSTABLE BED

Read all Warnings and Precautions in this manual before attempting to use the bed. Adjust the positioning of the bed by using the wireless remote.

The button functions on the remote are as follows:

 HEAD	Head Up: Raises the head position up.
 HEAD	Head Down: Lowers the head position.
 LEGS	Foot Up: Raises the foot position up.
 LEGS	Foot Down: Lowers the foot position.
FLAT	Reset: Returns the bed to the lay flat position.
ZERO GRAVITY	ZG: Zero Gravity Position.
LIGHT	Lighting: Lights up buttons on remote.

WARNING: Do not enter or exit the bed when any portion of it is in the raised position.


HAVE MORE QUESTIONS?

Check out our list of Frequently Asked Questions at vhealth.link/urr for helpful answers.



And if that doesn't answer your question, our customer service team would love to help! Feel free to connect with them by phone, e-mail, or chat on our website.

 service@vivehealth.com

 1-800-487-3808

 vivehealth.com

Distributed by

vive
health

8955 Fontana Del Sol Way
Naples, FL 34109
Made in China